

# EVS Bands Setup

## QUICK REFERENCE GUIDE

### | PREPARE THE EVS FOR SET UP

#### 1 GATHER

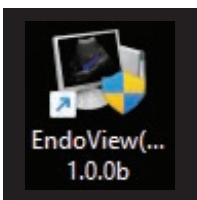
- |   |  |
|---|--|
| <input type="checkbox"/> EVS Bands          | <input type="checkbox"/> EVS Scanner             |
| <input type="checkbox"/> Sterile or HLD UTM | <input type="checkbox"/> Patient-ready endoscope |
| <input type="checkbox"/> TEC                | <input type="checkbox"/> Computer                |

#### 2 INSPECT

Wearing gloves, **inspect all EVS components** for intact packaging, irregularities, holes, cracks, and deformations.

#### 3 TURN ON

Turn on the computer and check for proper display of the software for the EVS Viewer.

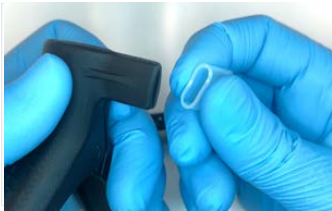


# EVS Bands Setup

## QUICK REFERENCE GUIDE

### ASSEMBLE THE EVS | MOUNTING THE UTM AND BANDS TO THE ENDOSCOPE

- 1 Load the Bands on the Band Applicator in the following manner (shown below)

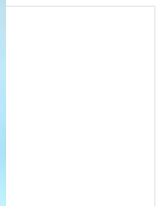


**Refer to IFU Appendix A for further details on endoscope compatibility.**

- 2 Slide the Band onto the position as shown. The final position of the Band on the Band Applicator is shown below right



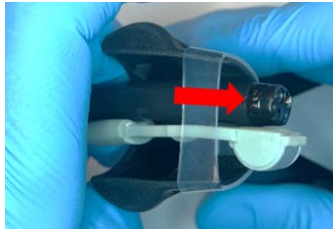
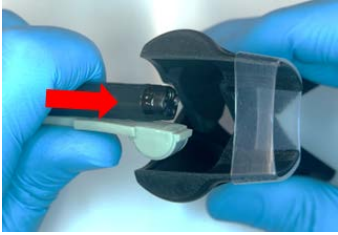
- 3 Align the Transducer approximately 4mm beyond the distal end of the gastroscope.



## EVS Bands Setup QUICK REFERENCE GUIDE

---

**4** With the Band Applicator pointing distal, depress the Band Applicator and slide the Band over the UTM and endoscope.



**5** Adjust the position of the UTM until the Transducer is positioned to the distal end of the endoscope. Make rotational adjustments as needed



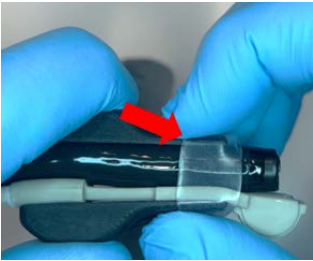
**6** Aligning the Transducer on the same side as the endoscope's UP angulation will provide optimal ultrasound coupling .



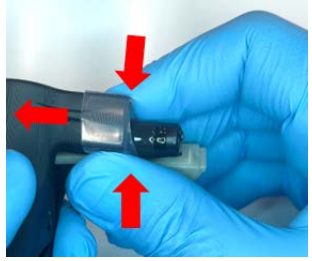
# EVS Bands Setup QUICK REFERENCE GUIDE

## | PLACEMENT OF BANDS ON THE ENDOSCOPE

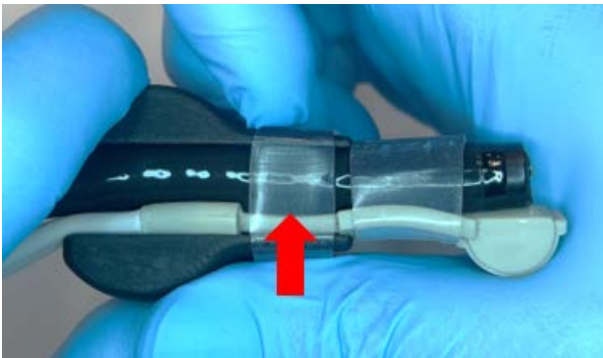
- 1** With the UTM properly positioned, and the Band Applicator released, push the Band a few millimeters off the distal side of the Band Applicator



- 2** Pinch the sides of the Band on the gastroscope while sliding the Band Applicator proximally until the Band slides off the Band Applicator

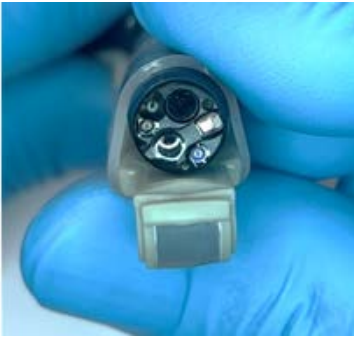


- 3** Load and place another Band on the proximal side of the first band. Load that Band just proximal to the first band as noted by the red arrow.

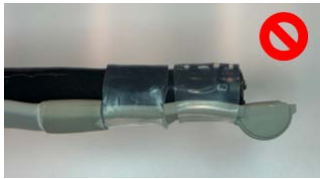


## EVS Bands Setup QUICK REFERENCE GUIDE

- 4** For the EchoBand configuration, the figures below show the proper placement of the Bands on the distal end of the endoscope with the UTM attached.

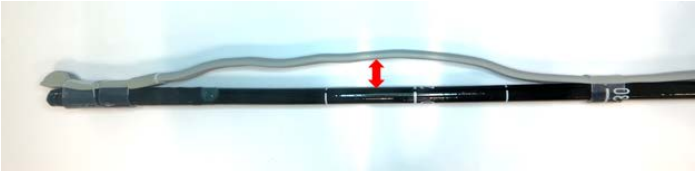


- 5** Improper Band placements are depicted below.

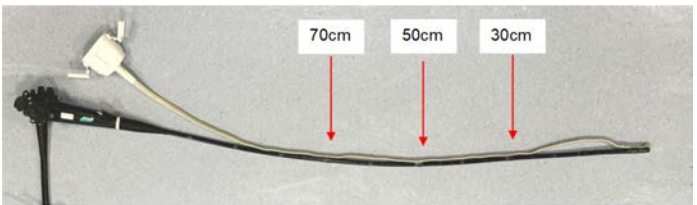


## EVS Bands Setup QUICK REFERENCE GUIDE

- With the first Band at 30 cm on the gastroscope, maintain a gap between the UTM cable and the endoscope with the UTM cable at the distal end, apprx. 25mm gap.



- Continue to place Bands along the insertion tube at 30, 50, and 70 cm intervals. The figure below shows the correct Band positions on the endoscope.



- The UTM and endoscope are now ready to perform an imaging-only procedure.

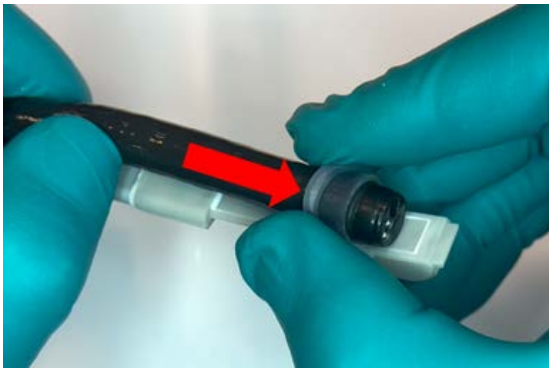
# EVS Bands Setup

## QUICK REFERENCE GUIDE

### | REMOVAL OF BANDS FROM THE ENDOSCOPE

- 1 Grasp both the UTM and the endoscope with one hand.

Starting at the distal end, and using the other hand, slide or unroll each Band off the distal end of the UTM and endoscope. Take notice of keeping the UTM cable flat against the endoscope to avoid bunching as seen in below



- 2 Alternatively, the Band may be cut off using scissors with blunt tips or other devices, taking care to not damage the endoscope or the UTM with the cutting instrument

# EVS Bands Setup QUICK REFERENCE GUIDE

## | ATTACHING THE TEC TO THE UTM

- 1 Connect the TEC to the UTM by aligning their respective connectors.



- 2 Affix the UTM Connector Latches to their corresponding TEC Connector Catches and finalize the connection.

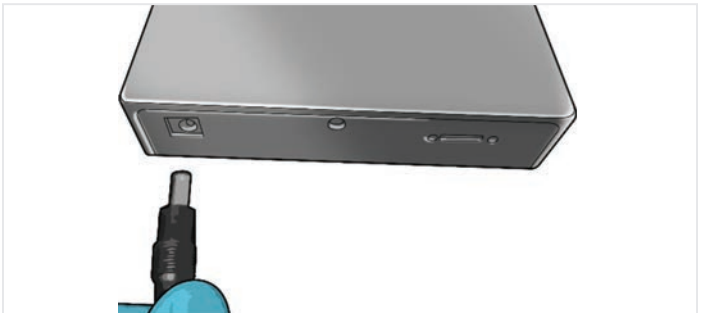




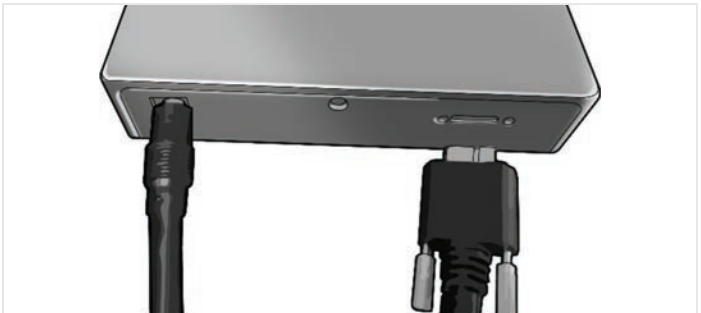
# EVS Bands Setup QUICK REFERENCE GUIDE

## | CONNECTING THE EVS SCANNER TO THE TEC

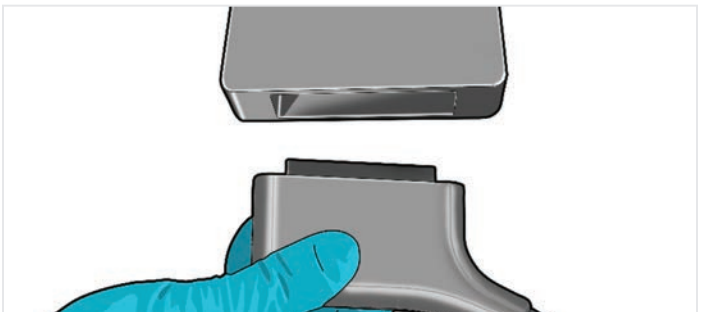
- 1** Attach the power supply cable to the EVS Scanner and plug it into the AC power supply.



- 2** Attach the USB cable to the computer and the EVS Scanner.



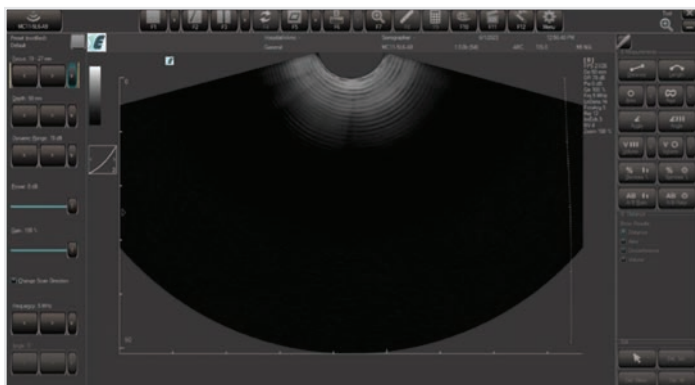
- 3** Attach the TEC to the EVS Scanner via the TEC EVS Scanner Connector.



# EVS Bands Setup QUICK REFERENCE GUIDE

## | CONNECT THE COMPUTER TO THE PATIENT-READY EVS

- 1 Connect the computer to the patient-ready EVS. Check the computer display to verify that the Ultrasound User Interface is displaying properly.



- 2 The EVS is ready for use!